

# USER MANUAL

## WIRELESS N ROUTER 150M

OWLR151U

Thank you for purchasing a wireless router brand OMEGA. We have made every effort to ensure that the device meets your expectations. If you have any questions relating to its operation, please visit [www.omega-technology.eu](http://www.omega-technology.eu), where in the support section you will find additional materials about this device.

The configuration procedure consists of **hardware installation** and **software configuration**. Before the first use, the manufacturer recommends visiting the [omega-technology.eu](http://www.omega-technology.eu) website and downloading the latest router firmware.

### Hardware Installation

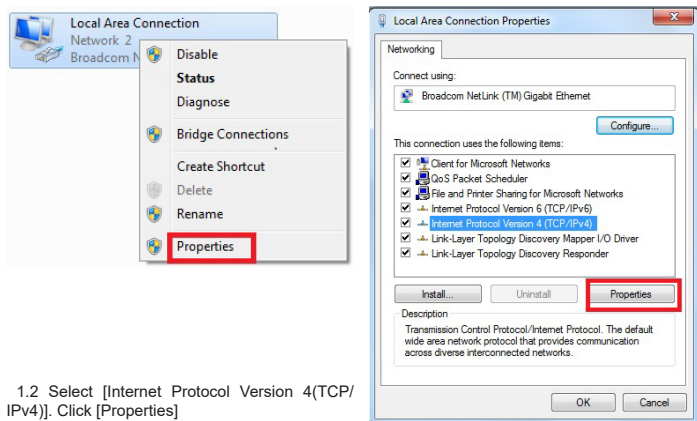
- According to the description on the packaging unit, connect the cables in the following order:
- plug RJ45 network cable internet signal to the WAN port of the router
  - if the router is connected by wire to a computer: plug the network cable to the port RJ45 LAN/ WAN port of the computer and the router's LAN
  - Connect the power cord to the supplied AC adapter and power supply connected to the mains (230V).
  - if the router is connected wirelessly to a computer - no need to connect additional cables.

Starting the router, **takes about a minute**, after which the LEDs should indicate operation and you can proceed to the software configuration.

### Software Configuration

#### 1. Configuration of the example of a computer operating system Microsoft Windows 7.

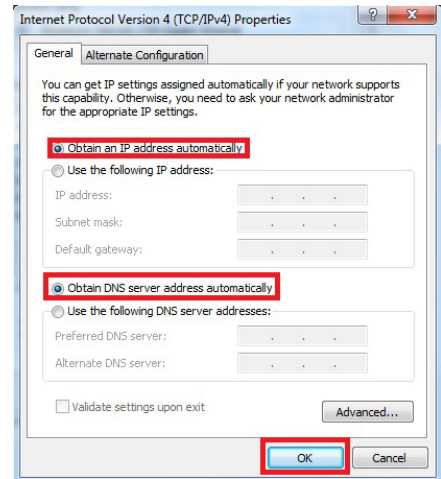
1.1 Click: "[Start]—[Control Panel]—[Network and Internet]—[Network and Sharing Center]—[Change adapter settings]—[Local Area Connection]". Select the connected network card. Then right click. "Local Area Connection". Select [Properties]



EN 1

1.2 Select [Internet Protocol Version 4(TCP/IPv4)]. Click [Properties]

1.3 Select [Obtain an IP address automatically]. [Obtain DNS Server address automatically]. Click [OK] Return back to the previous interface and click [OK]



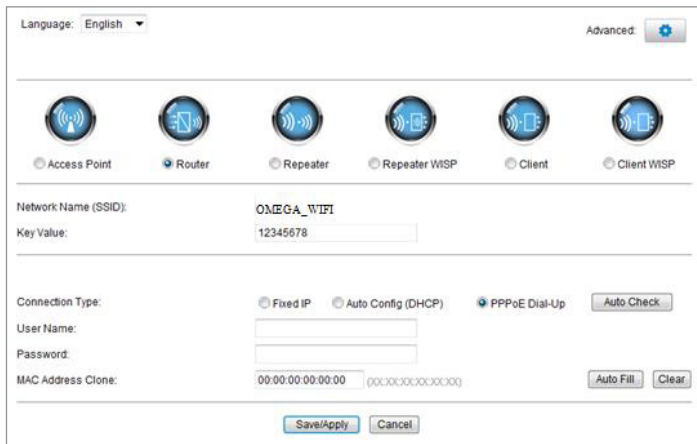
#### 2. Router setting

- Open the browser, input and connect: <http://192.168.1.1> .Click "GO".
- Input the username and password on the login screen(the default username and the password are admin). Click "OK"



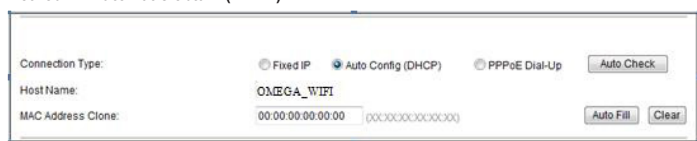
EN 2

2.3 Router Management screen will appear(Router default routing mode) You need to change the region settings by clicking the „Advanced“ gear wheel button, and selecting „Wireless“ and „Basic settings“ from the tree structure, then select the appropriate location in the Region field.



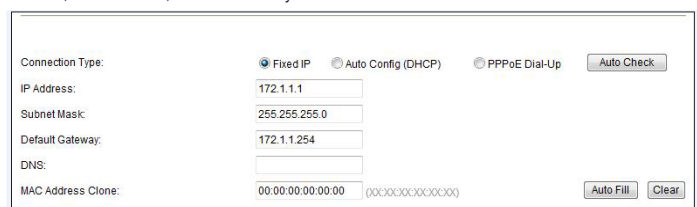
- Set your router network name(SSID)and password (key value).
- WAN Interface Setup

#### Method 1: Automatic obtain (DHCP)



#### Method 2: Fixed IP

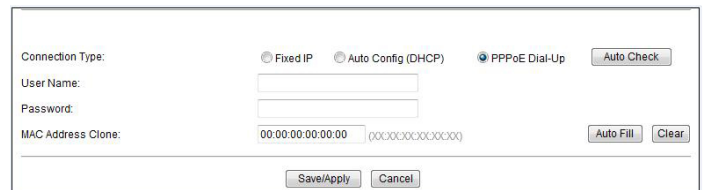
If you choose the fixed IP connection, the static IP settings page will appear. Please enter the IP address, Subnet Mask, Default Gateway and DNS



EN 3

#### Method 3: PPPoE connection

If you use the PPPoE(ADSL) connection, the PPPoE settings page will appear Please enter the user name and the password provided by your ISP



Choose your correct WAN connection, then click "save/apply".

#### 3. Wireless connecto:(for example with Windows Windows 7)

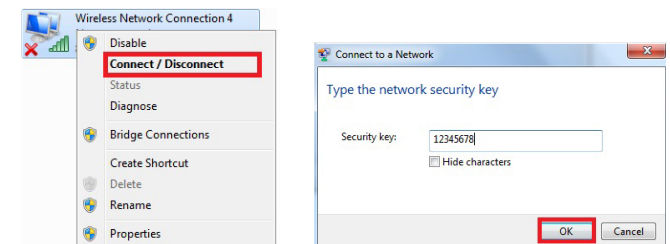
3.1Click"Start-----Control Panel-----Network and Internet-----Network and Sharing Center-----Change adapter settings-----Wireless Network Connection", Then right click "Wireless Network Connection" Select "Connect/Disconnect".

3.2 Select the wireless network name (SSID) OMEGA\_WIFI in the wireless network list, click „Connect.“

3.3 Enter Wi-Fi key (default 12345678), click „OK.“

Note: the default SSID and Network Key is on the product label on the bottom

3.4 Connection is successful – connected sign will appear.



#### 4.FAQs

- How to reset to default settings of the router? Keep pressing the Reset button near to the wan port while the device is on, releasing it after 5~10 seconds will restore the router's default settings.
- Laptop can't find the wifi signal?
  - If your laptop is with built-in wireless adapter, please confirm that the wireless adapter is working or not.
  - Check the wireless service in the laptop is open or not. Methods is as below: Right-click "my computer", choose "management". then choose "services and application", check the "wireless Zero Configuration" in the "Services" page. If the stage is not open, please right-click "wireless zero configuration" and click "open". If the open type shows it is forbidden, please right-click and choose the attribute, change the open type to automatic, then change the state to open.
  - Confirm the wireless function of Router is activated.
  - Check the driver of the wireless adapter in the device manager is successfully installed or not.

EN 4